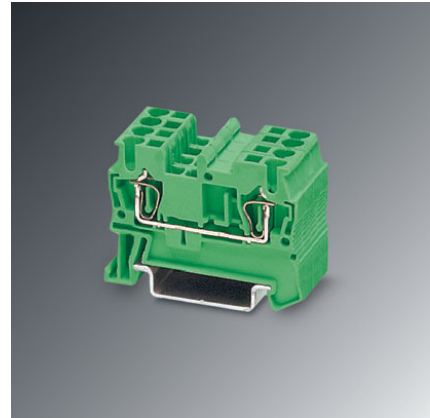


ST 2,5 GN

Order No.: 3037106

<http://eshop.phoenixcontact.de/phoenix/treeViewClick.do?UID=3037106>Feed-through terminal blocks with spring-cage connection, cross
section: 0.2 - 2.5 mm², width: 5.2 mm, color: green

Commercial data	
EAN	4017918599560
Pack	50 Pcs.
Customs tariff	85369010
Weight/Piece	0.0061 KG

Product notes

WEEE/RoHS-compliant since:
01/01/2003

[http://
www.download.phoenixcontact.com](http://www.download.phoenixcontact.com)
Please note that the data given
here has been taken from the
online catalog. For comprehensive
information and data, please refer
to the user documentation. The
General Terms and Conditions of
Use apply to Internet downloads.

Certificates / Approvals

Approval logo



CUL

Nominal voltage U_N	600 V
Nominal current I_N	20 A
AWG/kcmil	28-12

UL

Nominal voltage U_N	600 V
Nominal current I_N	20 A
AWG/kcmil	28-12
Certification	BV, CB, CUL, DNV, GL, GOST, LR, NK, UL, VDE-PZI

requested approbations

Certification Ex:	IECEX, KEMA-EX
-------------------	----------------

Accessories

Item	Designation	Description
------	-------------	-------------

Assembly

3030721	ATP-ST 4	Partition plate, for visual and electrical separation of terminal groups, width: 2 mm, color: gray
3022218	CLIPFIX 35	Snap-on end bracket, for 35 mm NS 35/7.5 or NS 35/15 mounting rail, can be fitted with Zack strip ZB 8 and ZB 8/27, terminal strip marker KLM 2 and KLM, width: 9.5 mm, color: gray
3030417	D-ST 2,5	Cover, width: 2.2 mm, length: 48.5 mm, color: Gray
1201442	E/UK	End clamp, for supporting the electronic base. If mounted vertically, 2 end clamps are required in each case
0801762	NS 35/ 7,5 CU UNPERF 2000MM	DIN rail, material: Copper, unperforated, height 7.5 mm, width 35 mm, length: 2 m
0801733	NS 35/ 7,5 PERF 2000MM	DIN rail, material: Steel, perforated, height 7.5 mm, width 35 mm, length: 2 m
0801681	NS 35/ 7,5 UNPERF 2000MM	DIN rail, material: Steel, unperforated, height 7.5 mm, width 35 mm, length: 2 m
1201756	NS 35/15 AL UNPERF 2000MM	DIN rail, deep-drawn, high profile, unperforated, 1.5 mm thick, material: Aluminum, height 15 mm, width 35 mm, length 2 m
1201895	NS 35/15 CU UNPERF 2000MM	DIN rail, material: Copper, unperforated, 1.5 mm thick, height 15 mm, width 35 mm, length: 2 m
1201730	NS 35/15 PERF 2000MM	DIN rail, material: Steel, perforated, height 15 mm, width 35 mm, length: 2 m
1201714	NS 35/15 UNPERF 2000MM	DIN rail, material: Steel, unperforated, height 15 mm, width 35 mm, length: 2 m
1201798	NS 35/15-2,3 UNPERF 2000MM	DIN rail, material: Steel, unperforated, 2.3 mm thick, height 15 mm, width 35 mm, length: 2 m

Bridges

3030161	FBS 2-5	Plug-in bridge for cross-connections in the terminal center, 2-pos., color: Red
3030174	FBS 3-5	Plug-in bridge for cross-connections in the terminal center, 3-pos., color: Red
3030187	FBS 4-5	Plug-in bridge for cross-connections in the terminal center, 4-pos., color: Red
3030190	FBS 5-5	Plug-in bridge for cross-connections in the terminal center, 5-pos., color: Red
3030213	FBS 10-5	Plug-in bridge for cross-connections in the terminal center, 10-pos., color: Red
3030226	FBS 20-5	Plug-in bridge for cross-connections in the terminal center, 20-pos., color: Red

Marking

3030941	WST 2,5	Warning cover, 5-pos., for terminal width: 5.2 mm
1050295	ZB 5:SO/CMS	Zack strip, 10-section, divisible, special printing, marking according to customer requirements
0803647	ZBFM 5:SO/CMS	Special printing, Zack marker sheet, flat, 120-section, divisible, marking according to customer requirements

Plug/Adapter

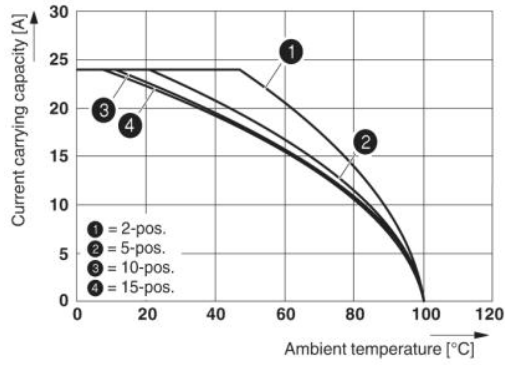
3002843	ISH 2,5/0,2	Insulation stop sleeve, color: White
3002856	ISH 2,5/0,5	Insulation stop sleeve, color: gray
3002869	ISH 2,5/1,0	Insulation stop sleeve, color: black
0201744	MPS-MT	Test plug, consisting of: Metal part for 2.3 mm diameter socket hole
3030925	PAI-4	Test adapter, for 4 mm diameter test plug PS and safety test plug, makes contact in the bridge shaft
3030983	PS-5	Modular test plug, for individual assembly of test plug strips, for UT, ST, DT and QT terminal blocks, can be labeled with ZBF 5, color: Red
0201647	RPS	Reducing plug, for transition from 4 mm diameter test plug socket, insulation: gray

Tools

1204517	SZF 1-0,6X3,5	Screwdriver, blade: 0.6 x 3.5 x 100 mm, length 180 mm
---------	---------------	---

Drawings

Diagram



The figure shows the derating curve of the ST 2,5... terminal block in connection with the SP 2,5 connector